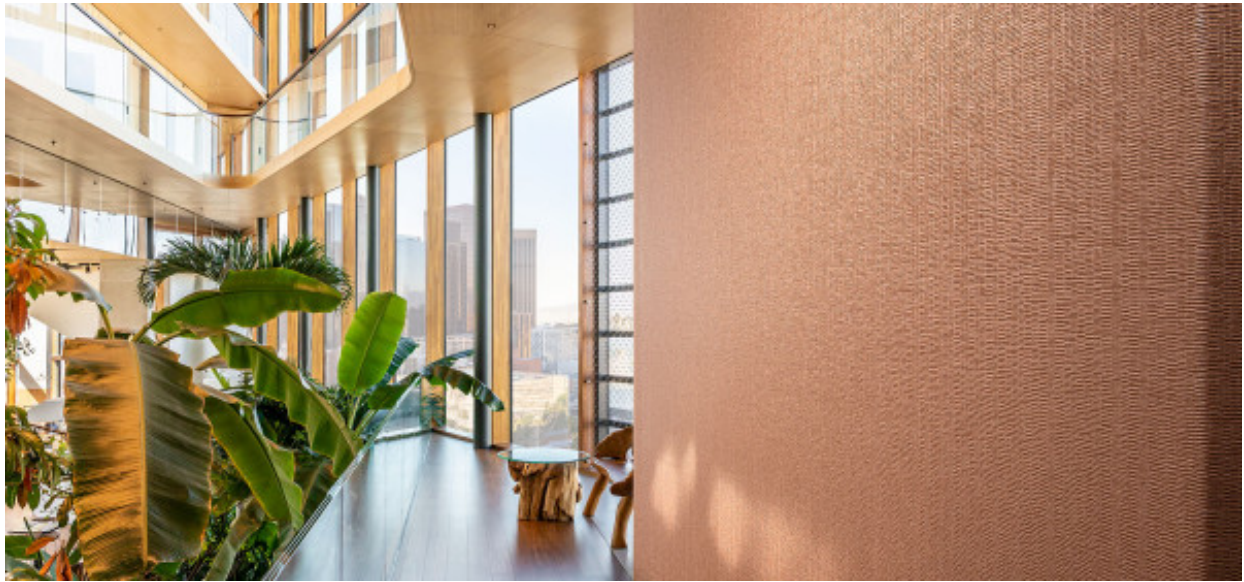


# Barkley

1102.01 - 1102.24



Produit

**Revêtement mural**

Description

**Une structure d'écorce de bois organique dans des teintes naturelles**

Composition

**Couche vinyle, impression au moyen d'encre à base d'eau, support en coton**

Largeur

**± 130 cm, ± 51 inches**

Poids

**± 440 gr/m<sup>2</sup>, ± 18 oz/yd<sup>1</sup>**

Absorption acoustique

**ISO 354, alpha w**

0.10

Non feu

**EN 13501 , B, s2 - d0**

**ASTM E84 , Pass, A**

**NFPA 286 , Pass**

Solidité lumière

**ISO 105-B02**

8 (scale 1-8)

Étiquettes



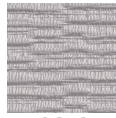
vinyl <sup>plus</sup>  
COMMITTED TO SUSTAINABLE DEVELOPMENT



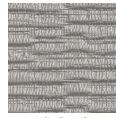
# Barkley

1102.01 - 1102.24

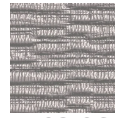
---



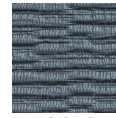
1102.04



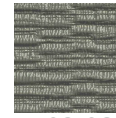
1102.05



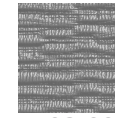
1102.06



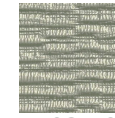
1102.07



1102.08



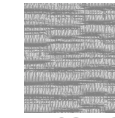
1102.09



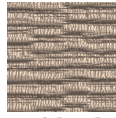
1102.10



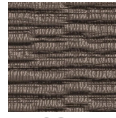
1102.11



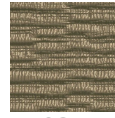
1102.12



1102.13



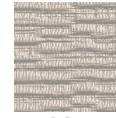
1102.14



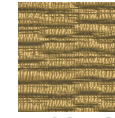
1102.15



1102.16



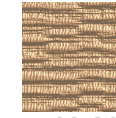
1102.17



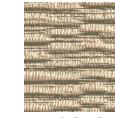
1102.18



1102.19



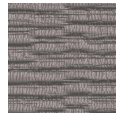
1102.20



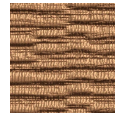
1102.21



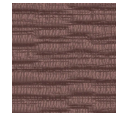
1102.22



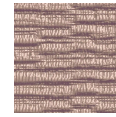
1102.23



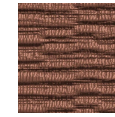
1102.24



1102.01



1102.02



1102.03