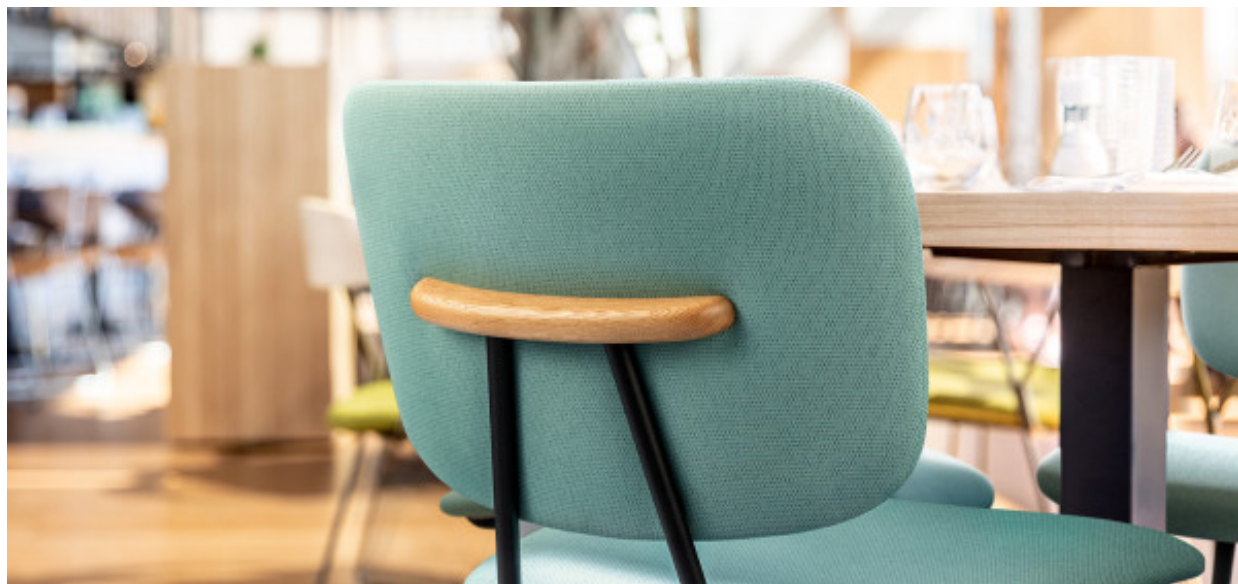


Arrow

7055.01 - 7055.23



Producto

Tapicerías

Descripción

Estructura de tela bicolor de alegres colores claros

Composición

Espuma de vinilo, soporte de algodón/poliéster

Anchura

± 137-140 cm, ± 54-55 inches

Peso

± 800 gr/m², ± 36 oz/yd²

Combustión retardada

EN 1021/1-2 , Pass

BS 5852 , Crib 5

NF P 92/503-507 or NF D 60-013 , M2

DIN 4102 , B2

Cal TB 117-2013, section 1 , Pass

IMO 2010 FTP part 8 , Pass

NFPA 260 , Class 1

Resistencia al frotamiento

ISO 105 X12

wet 5 (scale 1-5) / dry 5 (scale 1-5)

AATCC 8

wet 5 (scale 1-5) / dry 5 (scale 1-5)

Insensibilidad a la luz

ISO 105 B02

7 (scale 1-8)

Etiquetas

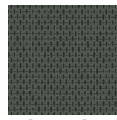


USCG -
EU MRA
0038

vinyl ^{plus}
COMMITTED TO
SUSTAINABLE DEVELOPMENT

Arrow

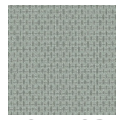
7055.01 - 7055.23



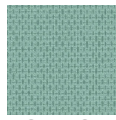
7055.01



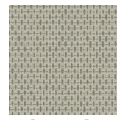
7055.02



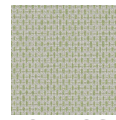
7055.03



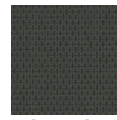
7055.04



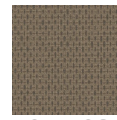
7055.05



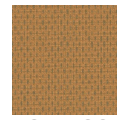
7055.06



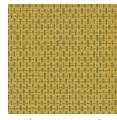
7055.07



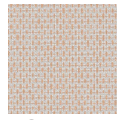
7055.08



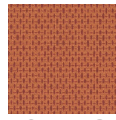
7055.09



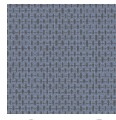
7055.10



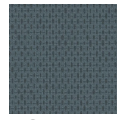
7055.11



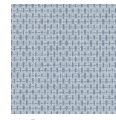
7055.12



7055.13



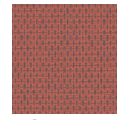
7055.14



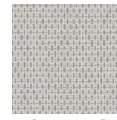
7055.15



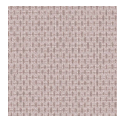
7055.16



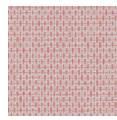
7055.17



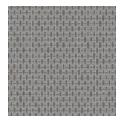
7055.18



7055.19



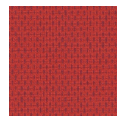
7055.20



7055.21



7055.22



7055.23