

Arches

7066.01 - 7066.17



Produto

Revestimento para mobiliário

Descrição

Estrutura de trama têxtil dinâmica

Composição

Espuma vinílica, base de malha de algodão/poliéster

Largura

± 137-140 cm, ± 54-55 inches

Peso

± 800 gr/m², ± 36 oz/yd¹

Resistência ao fogo

EN 1021/1-2 , Pass

BS 5852 , Crib 5

NF P 92/503-507 or NF D 60-013 , M2

DIN 4102 , B2

Cal TB 117-2013, section 1 , Pass

IMO 2010 FTP part 8 , Pass

NFPA 260 , Class 1

Resistência à fricção

ISO 105 X12

wet 5 (scale 1-5) / dry 5 (scale 1-5)

AATCC 8

wet 5 (scale 1-5) / dry 5 (scale 1-5)

Resistência à luz

ISO 105 B02

7 (scale 1-8)

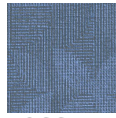
Marcas de qualidade



vinyl ^{plus}
COMMITTED TO SUSTAINABLE DEVELOPMENT

Arches

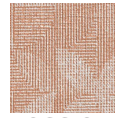
7066.01 - 7066.17



7066.17



7066.01



7066.04



7066.05



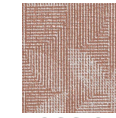
7066.10



7066.09



7066.08



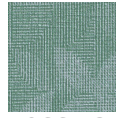
7066.07



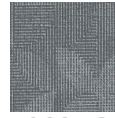
7066.06



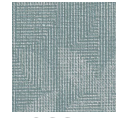
7066.11



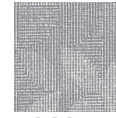
7066.12



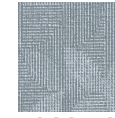
7066.13



7066.14



7066.15



7066.16



7066.03



7066.02